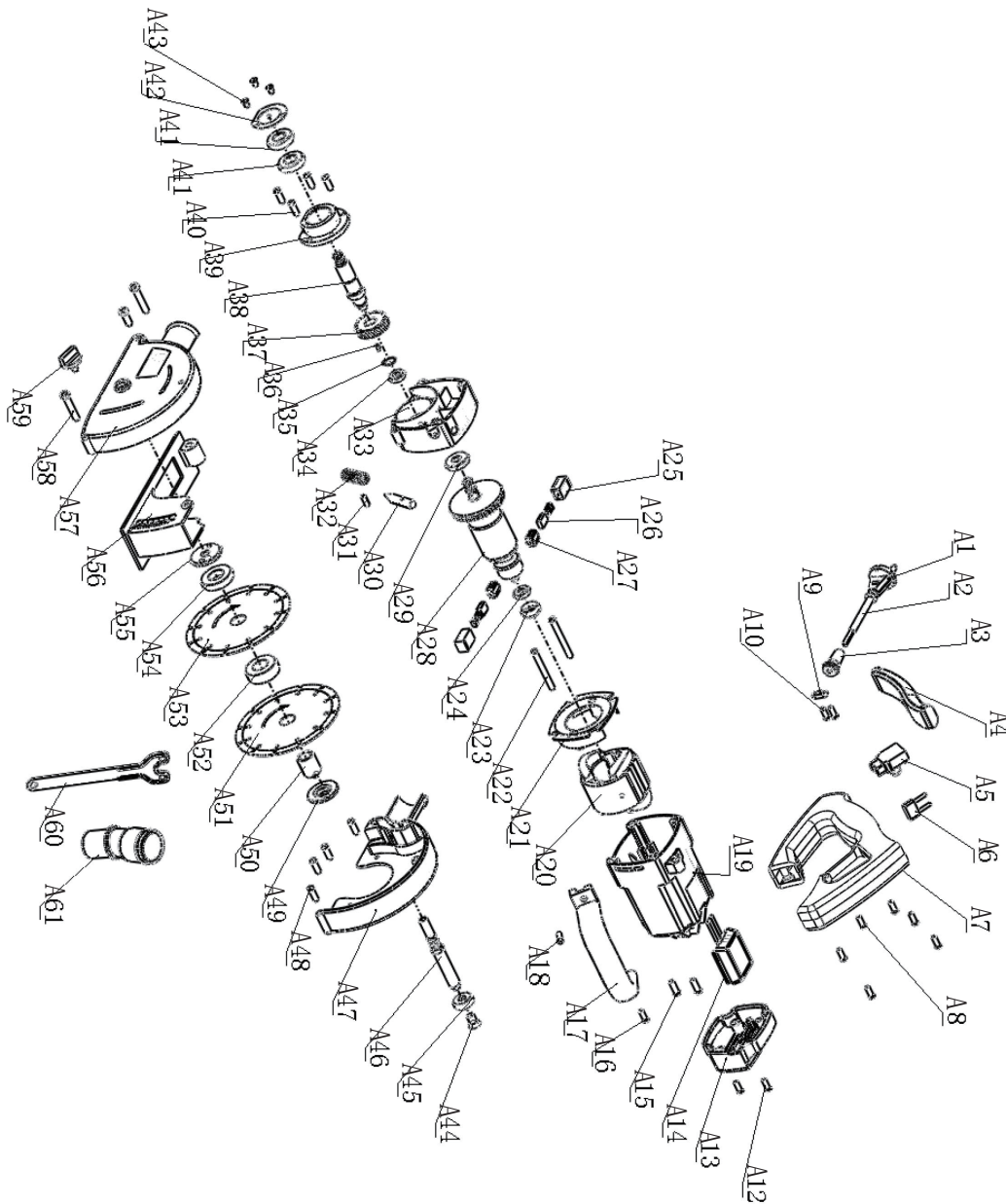


# Sturm!®

## AG915S



NO.	DESCRIPTION	NO.	DESCRIPTION
A1	PLUG	A32	SPRING
A2	CABLE	A33	GEARBOX
A3	CABLE COAT	A34	BEARING 608Z
A4	SOFT HANDLE	A35	SHAFT RETAINER
A5	SWITCH	A36	KEY
A6	CAPACITANCE	A37	GAER
A7	HANDLE	A38	OUTPUT SHAFT
A8	SCREW	A39	GEAR COVER
A9	IMPACTED PLANK	A40	SCREW
A10	SCREW	A41	BEARING 6003Z
A12	SCREW	A42	BEARING PLATE
A13	COVER	A43	SCREW
A14	SOFT START	A44	SCREW
A15	SCREW	A45	ROLLER
A16	SCREW	A46	SUPPORT SHAFT
A17	DEPUTY HANDLE	A47	FIXED HOOD
A18	SCREW	A48	SCREW
A19	CHASSIS	A49	LOWER PLATEN
A20	STATOR	A50	LOCATING RING
A21	WIND RING	A51	SAW
A22	SCREW	A52	LONG DISTANCE RING
A23	BEARING SLEEVE	A53	SAW
A24	BEARING 608Z	A54	SHORT DISTANCE RING
A25	BRUSH HOLDER	A55	UPPER PLATEN
A26	COPPER SETS	A56	BACKPLANE
A27	BRUSH	A57	FIXED HOOD
A28	ROTOR	A58	SCREW
A29	BEARING 6001Z	A59	LOCKING KNOB
A30	THE STOPPER SHAFT	A60	WRENCH
A31	LOCATING PINS	A61	VACUUM TUBE

RU-ST20161122 VER: 2.1

нас рекомендуют друзья